

# POWER WINDOW CONTROL SYSTEM

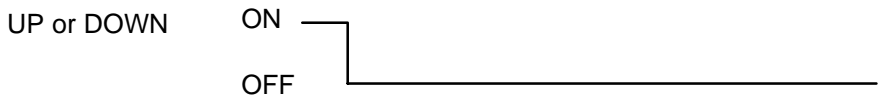
## TROUBLESHOOTING

BE19H-02

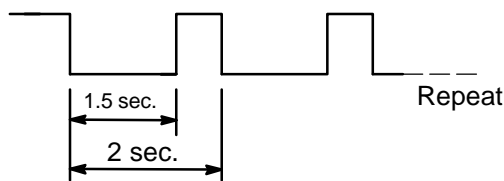
**1 One touch power window does not move up and down. (Prepare normal master and regulator switch.)**

After turning the ignition switch ON and power window master switch on the driver side UP or DOWN and power window regulator switch on the passenger side UP or DOWN, check that the master and regulator switch AUTO light blinks.

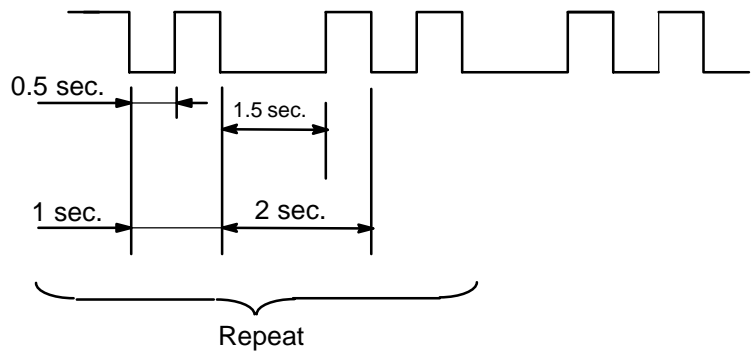
- Error is classified into the following 3 types according to the way of blinking.



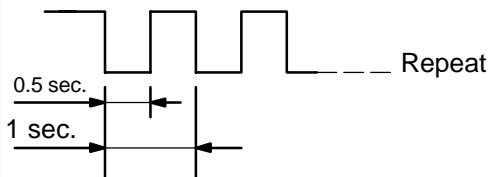
① Limit switch error



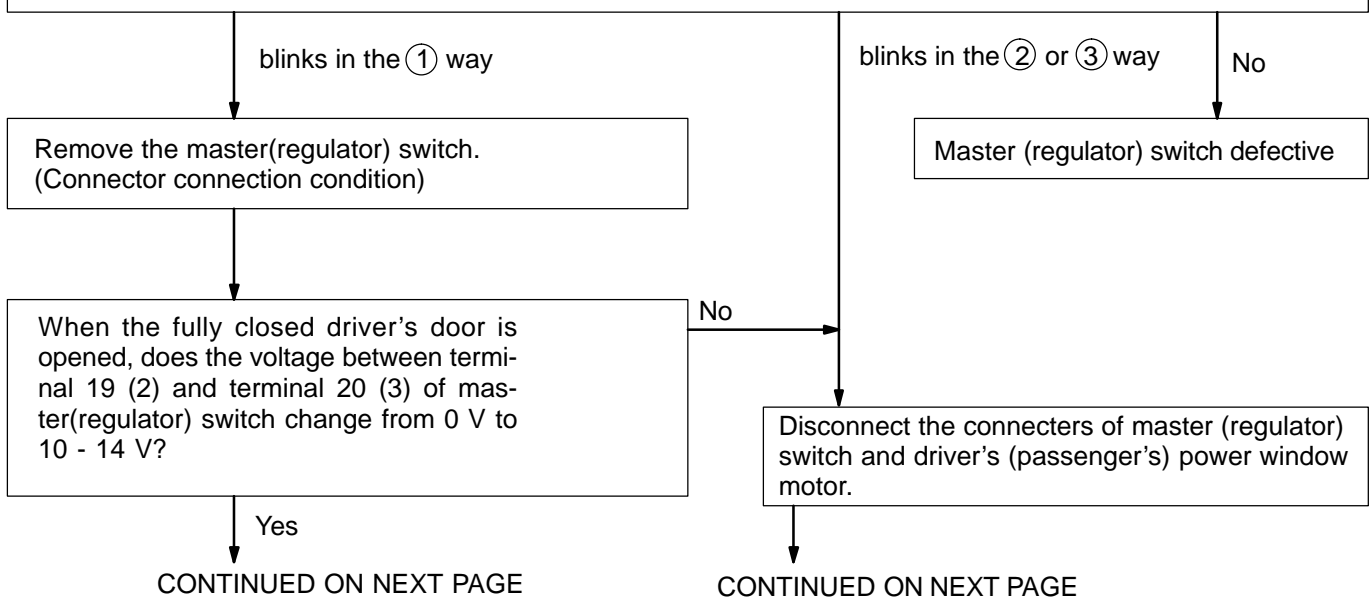
③ Limit switch/Pulse sensor synchronize error



② Pulse sensor error



- <Reference>
- When 30 seconds have elapsed since blinking begins, blinking stops. (AUTO light remains ON)
  - When turning the ignition key OFF, blinking stops.



CONTINUED FROM PREVIOUS PAGE

CONTINUED FROM PREVIOUS PAGE

Master(regulator) switch defective

Does continuity exist between connector terminals on the vehicle side?  
 Master(regulator) switch side ↔ Motor side  
 20 (3) terminal ↔ 4 terminal  
 21 (4) terminal ↔ 3 terminal  
 19 (2) terminal ↔ 5 terminal

No  
 Wire harness defective (open)

Does continuity exist between 20, 21, terminals and 19 on the master (regulator) switch side or terminals 4, 3, and 5 on the motor side and the body ground?

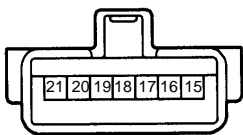
Yes  
 Wire harness defective (short)

Connect the connector of power window motor.

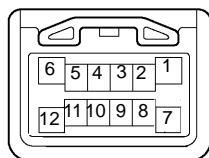
Connect the normal master (regulator) switch, do AUTO UP and AUTO DOWN operations work?

No  
 Power window motor defective.

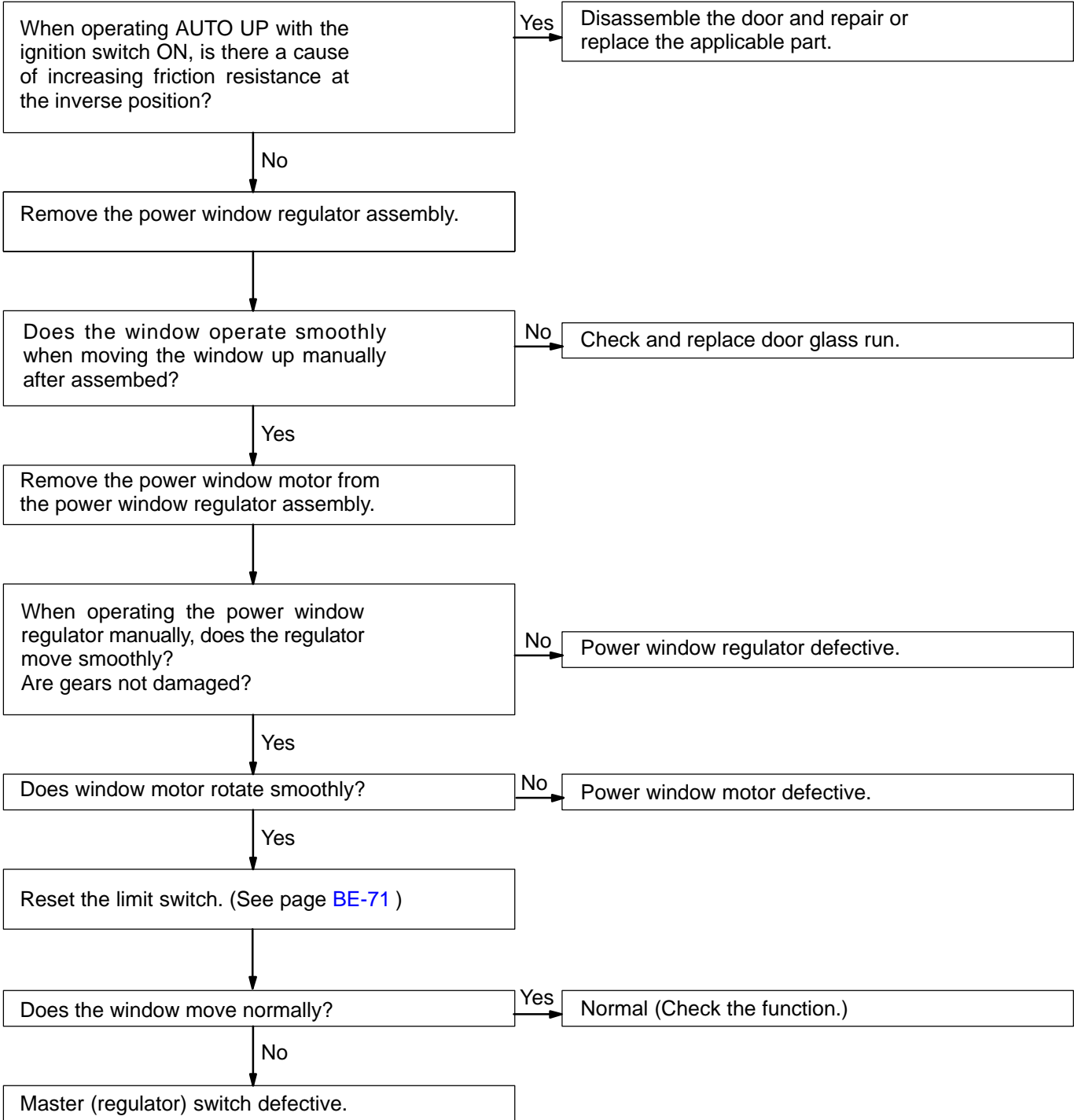
Master Switch



Regulator Switch



**2 During AUTO UP operation, the power window moves down.**



**3 The DOWN function does not work though foreign objects are caught in the power window glass.**

