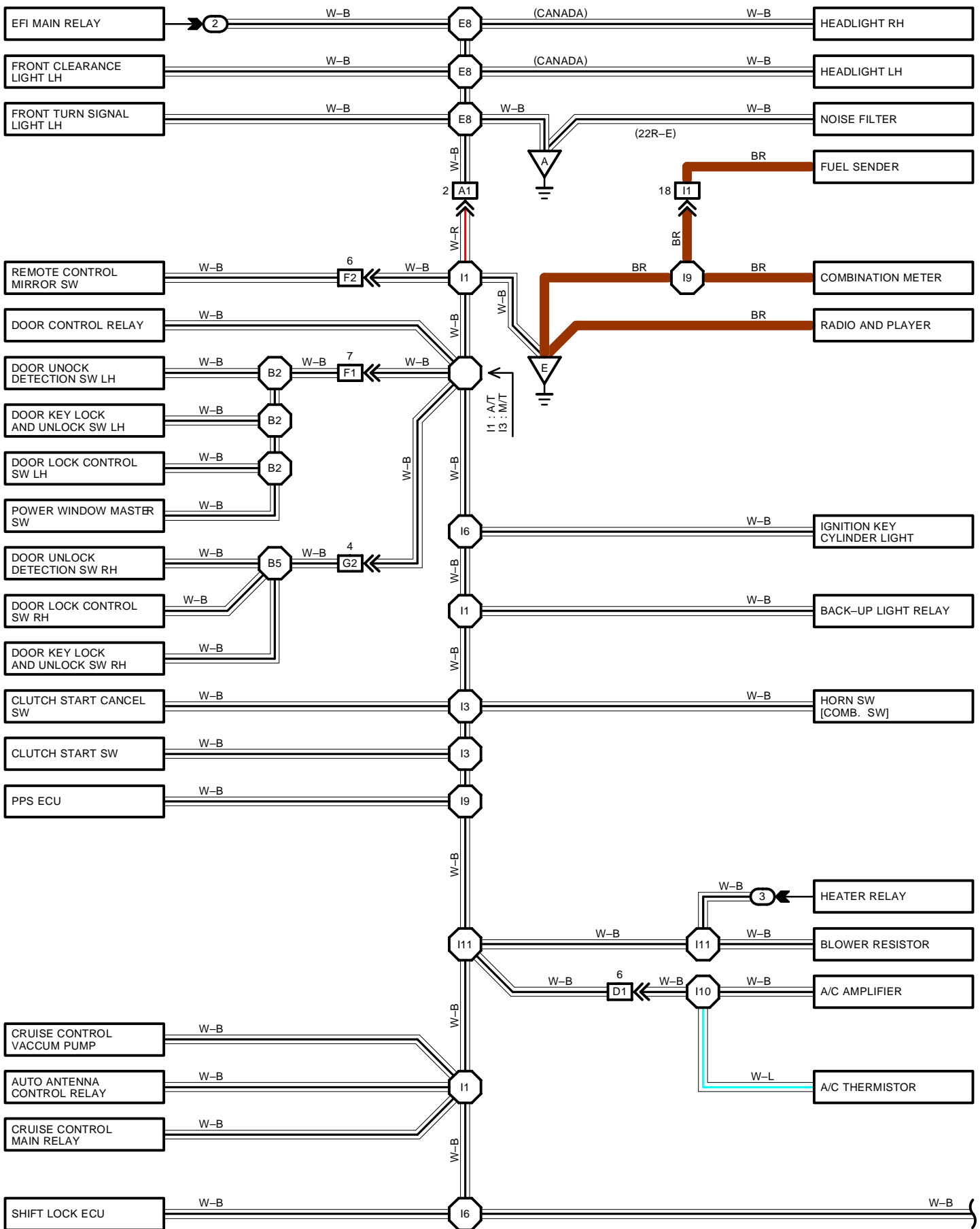
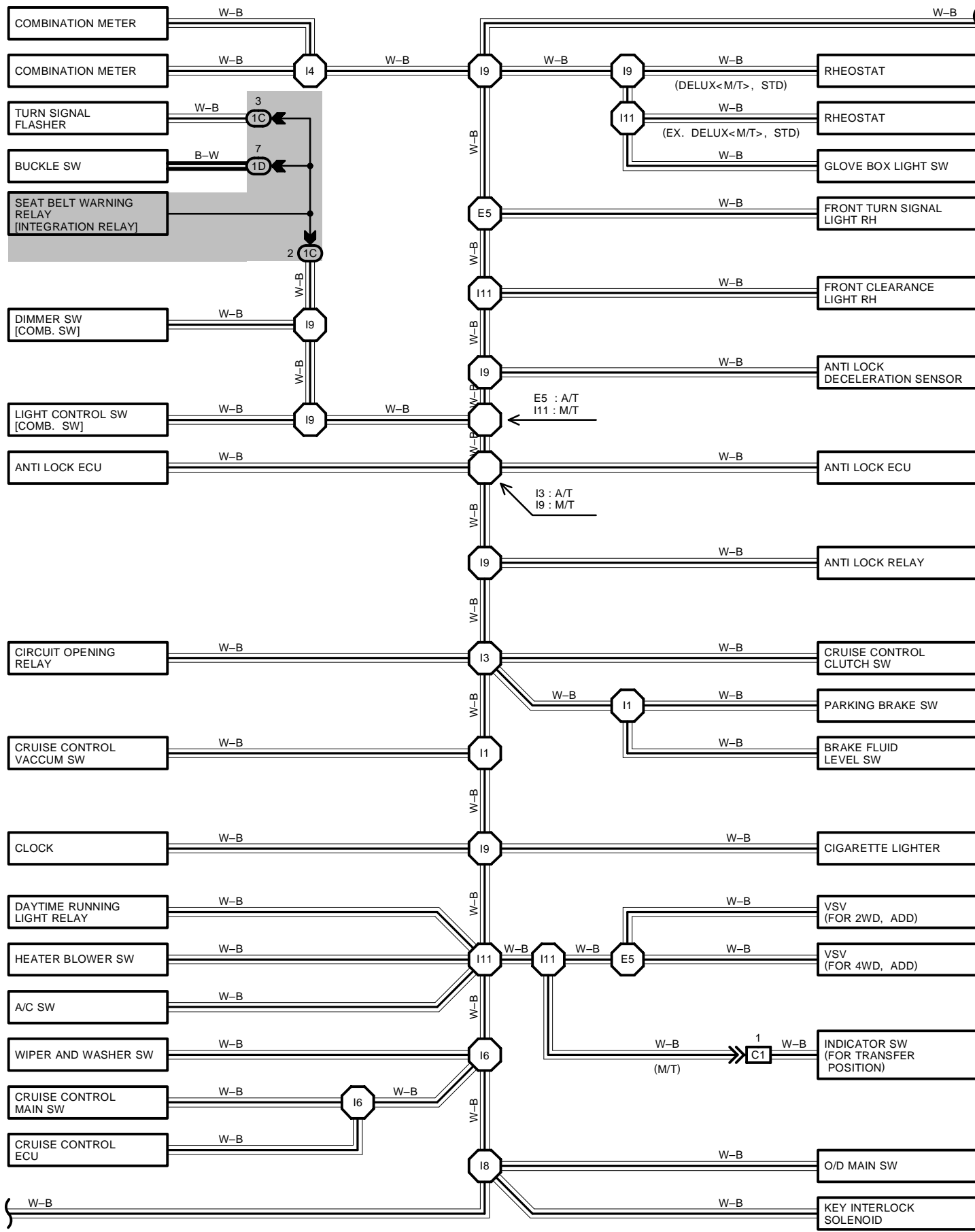
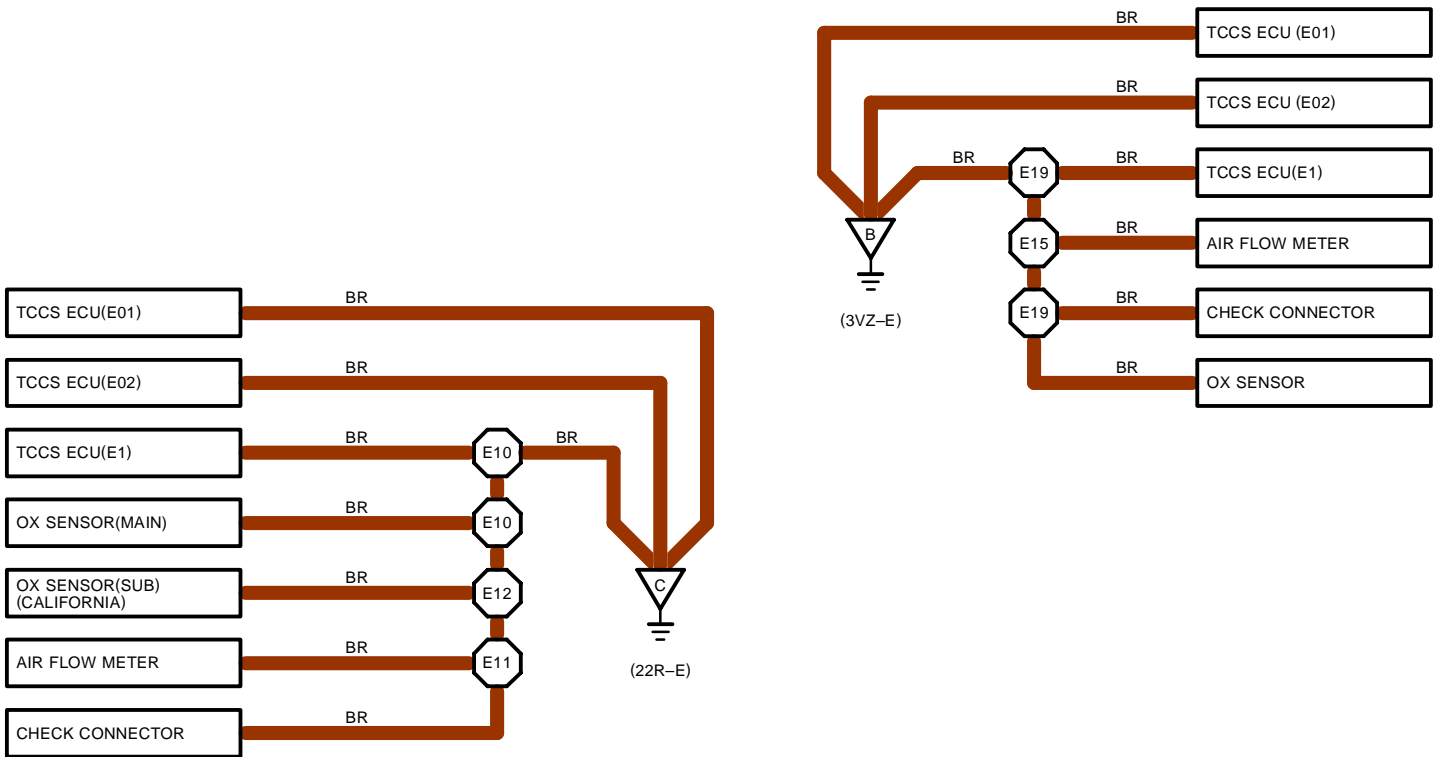
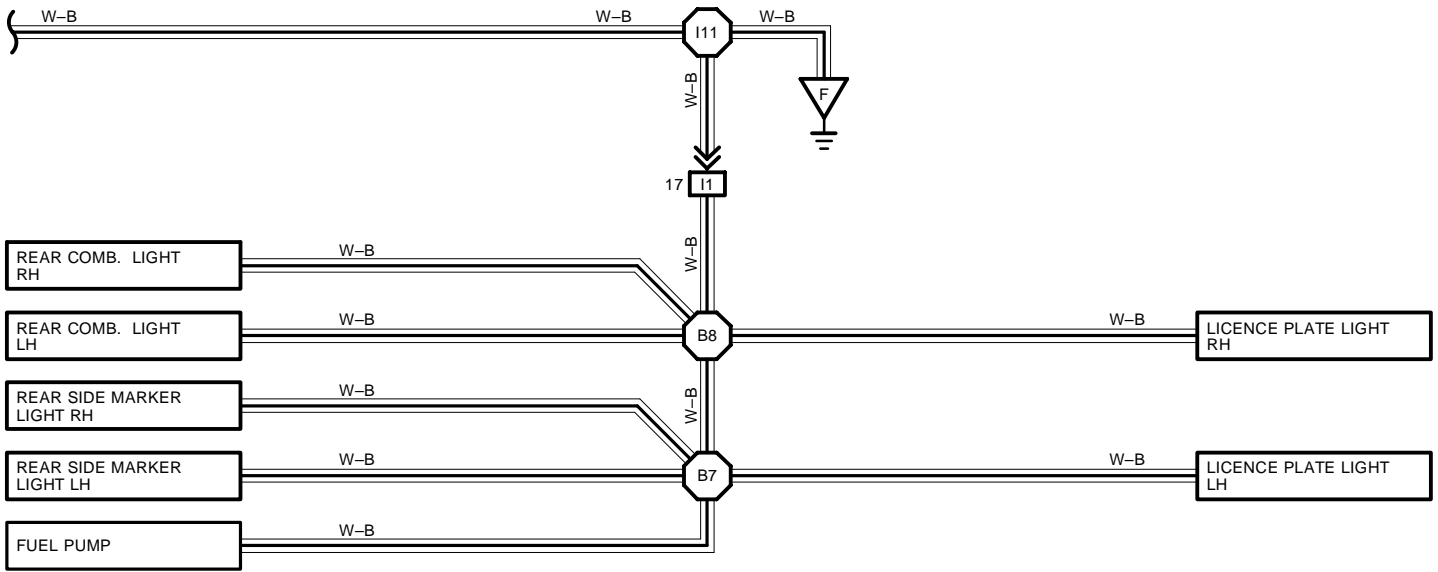


GROUND POINT





GROUND POINT



 : RELAY BLOCKS

CODE	SEE PAGE	
2	17	R/B NO. 2 (ENGINE COMPARTMENT RIGHT)
3	20	R/B NO. 3 (GLOVE BOX RIGHT)

 : JUNCTION BLOCK AND WIRE HARNESS CONNECTOR

CODE	SEE PAGE	JUNCTION BLOCK AND WIRE HARNESS (CONNECTOR LOCATION)
1C	18	COWL WIRE AND J/B NO.1 (LEFT KICK PANEL)
1D		

 : CONNECTOR JOINING WIRE HARNESS AND WIRE HARNESS

CODE	SEE PAGE	JOINING WIRE HARNESS AND WIRE HARNESS (CONNECTOR LOCATION)
A1	30	ENGINE ROOM MAIN WIRE AND COWL WIRE (LEFT KICK PANEL)
C1	30	ENGINE WIRE AND COWL WIRE (RIGHT KICK PANEL)
D1	30	COWL WIRE AND A/C WIRE (BEHIND GLOVE BOX)
F1	30	DOOR LEFT WIRE AND COWL WIRE (LEFT KICK PANEL)
F2		
G2	30	DOOR RIGHT WIRE AND COWL WIRE (RIGHT KICK PANEL)
I1	32	FRAME WIRE AND COWL WIRE (UNDER PASSENGER'S SEAT)

 : GROUND POINTS

CODE	SEE PAGE	GROUND POINTS LOCATION
A	26 (3VZ-E)	LEFT FENDER
	28 (22R-E)	
B	26	CAMSHAFT BEARING CAP
C	28	INTAKE MANIFOLD
E	30	LEFT KICK PANEL
F	30	RIGHT KICK PANEL

 : SPLICE POINTS

CODE	SEE PAGE	WIRE HARNESS WITH SPLICE POINTS	CODE	SEE PAGE	WIRE HARNESS WITH SPLICE POINTS		
E5	26 (3VZ-E)	COWL WIRE	I4	30	COWL WIRE		
	28 (22R-E)		I6				
E8	26 (3VZ-E)	ENGINE ROOM MAIN WIRE	I8				
	28 (22R-E)		I9				
E10	28 (22R-E)	ENGINE WIRE	I10				
E11			I11				
E12			B2			32	DOOR LEFT WIRE
E15	26 (3VZ-E)	COWL WIRE	B5			32	DOOR RIGHT WIRE
E19	26 (3VZ-E)		B7			32	FRAME WIRE
I1	30		B8				
I3							